

# Next Wave, Venue Hire Pack

## Office

Next Wave Inc.  
Brunswick Mechanics  
Wurundjeri Country  
270 Sydney Road  
Brunswick, VIC 3056

## Get in touch

[info@nextwave.org.au](mailto:info@nextwave.org.au)  
[nextwave.org.au](http://nextwave.org.au)

## Join the community

FB	<a href="#">@nextwavefestival</a>
IG	<a href="#">@next_wave</a>
LinkedIn	<a href="#">@next_wave</a>
X	<a href="#">@next_wave</a>

From the unceded lands of the Wurundjeri Woi-wurrung people of the Eastern Kulin Nations, Next Wave is privileged to traverse the land and waterways of this continent of many nations – to share in the act of art making and culture building – grounded on justice, friendship and care. This always was, and always will be, Aboriginal land.



Next Wave's home base, Brunswick Mechanics, is available for hire for creative developments and rehearsals.

Whether you need a space to meet with collaborators to get feedback on a script or new body of work, or you're looking to workshop or rehearse before a public outcome, we offer competitive venue hire options for individuals and organisations looking for space to experiment, play and collaborate.





# Theatre

Our theatre is a traditional black box (17,625mm x 8,400mm). The space is fully equipped with a suite of lighting, sound and AV equipment, and features a retractable seating bank. The theatre connects to a backstage area and dressing room space.

The space is suitable for rehearsals and creative development.







## Standard set up

The following equipment will be set up and included in all hires of the space. Please indicate on your venue hire booking request form if you require additional Production equipment and/or set-up and our Production Coordinator will get in touch with you to discuss further.

### Audio

Console	Allen & Heath ZED420 Analog Mixing Desk
Multicore	Connex 2830 Stagebox – 24in/4out, 30m
Crossover	dbx 223xs Stereo 2-Way/Mono 3-way Crossover
Amplifier	Yamaha P4500 Power Amplifier
FOH Speakers	2 x JBL SP215-9 2-way Passive Speakers (flown in lighting grid)
Subwoofers	2 x PreSonus AIR15 1200W 15" Active Subwoofers

### Lighting

Working Lights	4 x LED Floodlights
Console	LSC Mantra Lite + Wing
Dimmers	4 x LSC E-Pak Dimmer Racks (12 channels per rack)
Face Lights	5 x Selecon Compact PC 1.2kW
Specials	5 x Selecon Acclaim Axial Zoomspot 18–34 degrees
Stage Wash	6 x Selecon Fresnel 650W
Flood Lights	2 x Cyc cell flood
Colour Wash	8 x Nitek Lite Par T12 Colour LED

### Vision

Projector	Optoma EH515T 5500 Lumen Projector (Mounted in Lighting Grid)
Projector Screen	Smartfold Projector Screen (Image Size: 3319mm x 1867mm or 150" (3.81m) diagonal)

### Power

3-Phase	4 x 32A 3-phase outlets
Standard 10A	Multiple 10A 240V sockets around the room
4-pin 10A	1 x 4-pin 10A for seating bank power

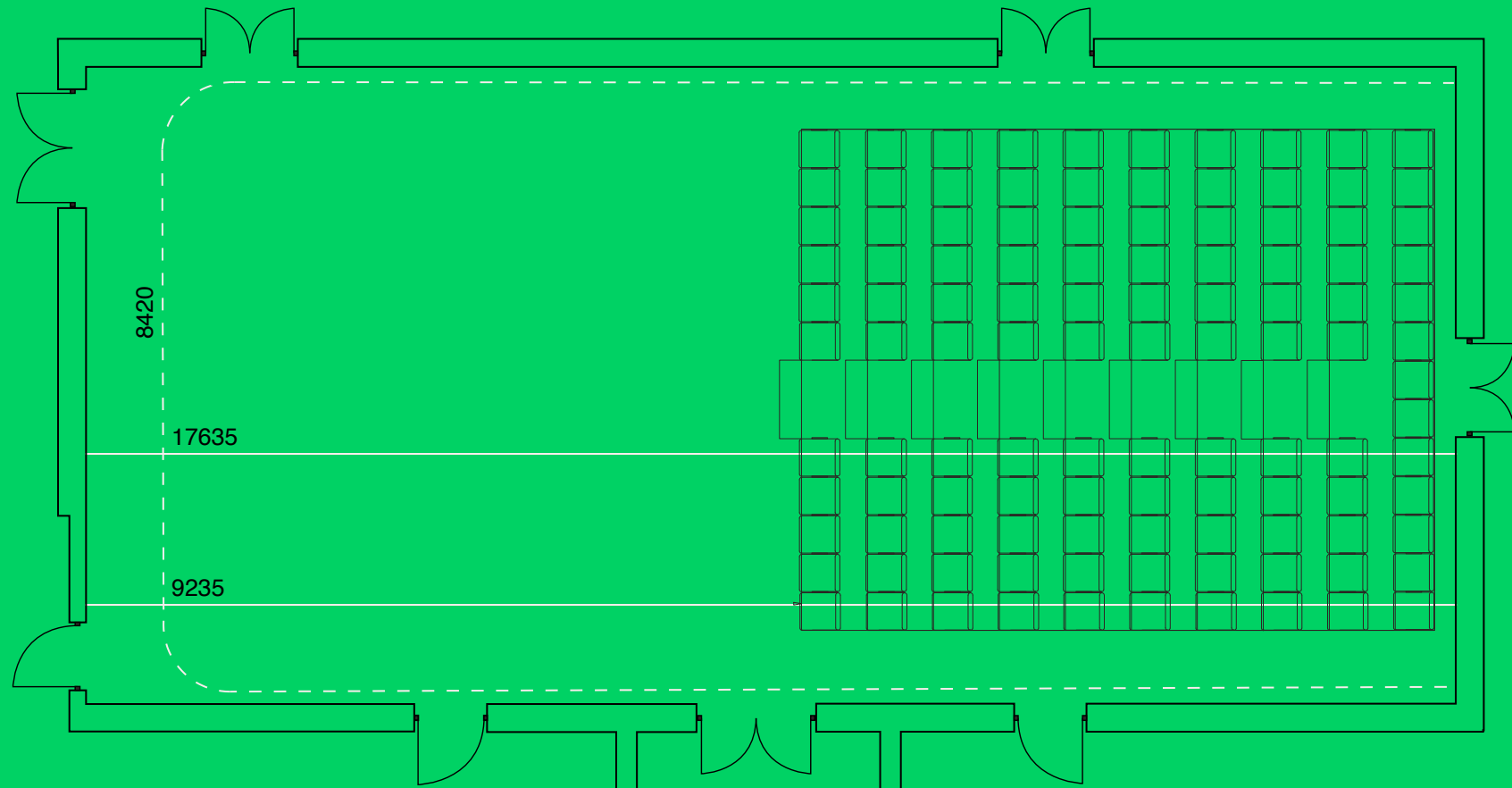


## Room Specifications

Capacity	111 seated in retractable seating bank or 200 standing
Length of Room	17,625mm length
Width of Room	8,400mm width
Height – Floor to Ceiling	6,145mm floor to ceiling at centre of room (room slopes at sides)
Height – To Underside of Grid	4,550mm floor to Grid
Floor	Timber floor – Painted black
Lighting Bars	8 x patch bars, 6 x outlets per bar SWL = 30kg per lineal metre The maximum single load which may be supported directly to each steel dropper is 12-kg. No dynamic loads should be supported on the frame unless specifically approved by the venue.
Loading Dock/Access	Loading via double door or ramp – 1,050mm wide x 2,200mm high
Room Drapes	Heavy black drapes on rails around perimeter of room, capable of blackout. Heavy white retractable drapes over window arches.
Emergency Exits	3 x Emergency Exits – One on west side (into foyer), two on east side (out into carpark)
Internet Access	Wireless NBN and 1 x hardwired ethernet port



# Theatre plan (seating bank extended)





# Studio 1

Studio 1 is a flexible, large bright room (10,035mm x 6,280mm) with hardwood floors, white walls, high ceilings and four large windows.

The space is suitable for creative development, photoshoots, rehearsals, meetings and auditions.







## Standard set up

The following equipment will be set up and included in all hires of the space. Please indicate on your venue hire booking request form if you require additional Production equipment and/or set-up and our Production Coordinator will get in touch with you to discuss further.

### Audio

Console	Soundcraft EFX8 Analog Mixing Desk
FOH Speakers	2 x JBL EON 15" Active Speaker

### Lighting

Working Lights	Suspended ring of LED battens around perimeter of space + 6 x Downlights
----------------	--

### Vision

Projector	Epson EH-TW3600 2000 Lumen Projector
Projector Screen	Grandview portable Pop-up Screen (Image Size: 1630mm x 1220mm)

### Power

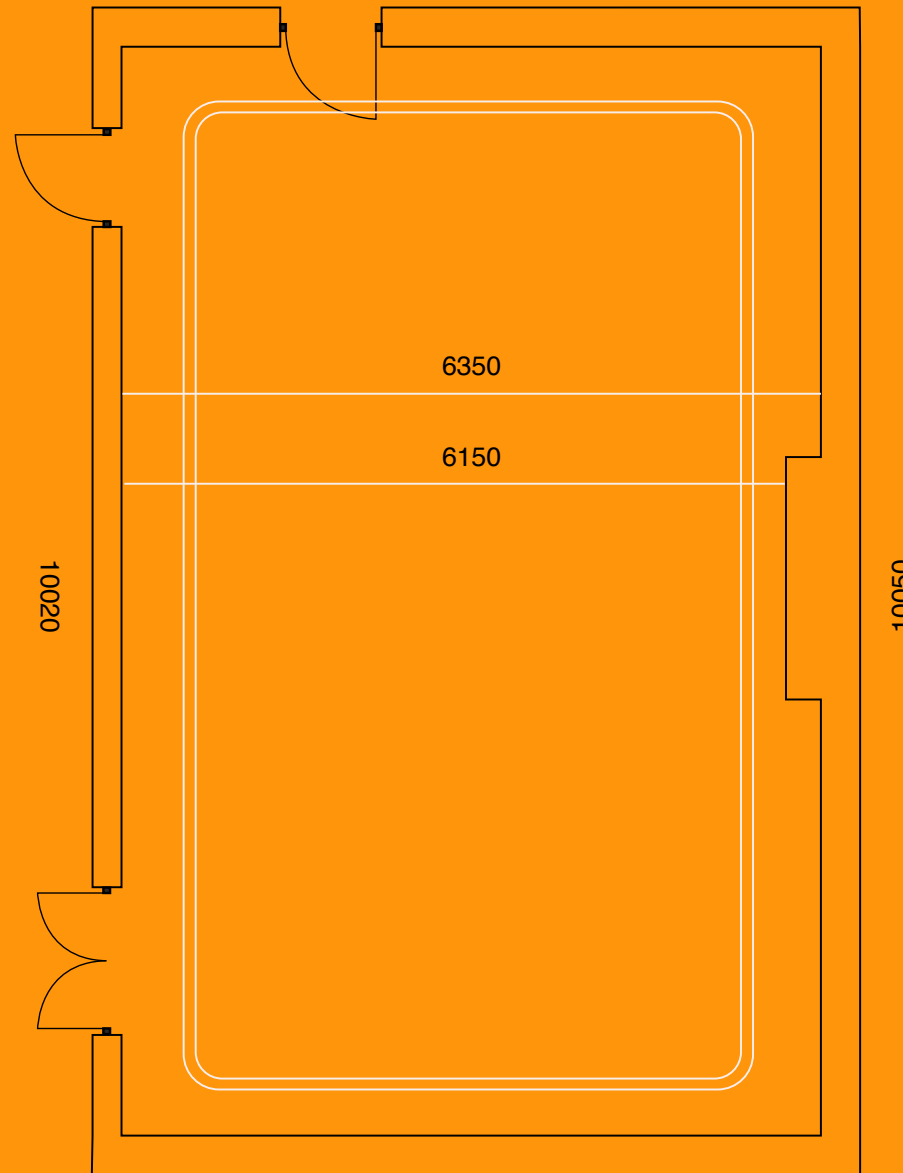
3-Phase	1 x 32A 3-phase outlet
Standard 10A	Multiple 10A 240V sockets around the room

## Room Specifications

Capacity	55 seated or 80 standing
Length of Room	10,035mm length
Width of Room	6,280mm width
Height – Floor to Ceiling	5,000mm floor to ceiling
Height – Floor to Light Ring	3,044mm floor to underside of Light Ring
Floor	Timber Floorboards – Polished wood
Walls	White painted walls
Access Doorways	1,015mm wide x 2,250mm high
Room Drapes	No drapes or curtains over windows
Emergency Exit	Main entrance is emergency exit into foyer
Internet Access	Wireless NBN and hardwired ethernet ports



# Studio 1 Plan





# Additional Equipment

Must be booked and is contingent on availability

## Audio

### Speakers

- 2 x QSC CP12 12" Active Speaker
- 2 x SM121V 2-Way Passive Floor Monitor
- 2 x JBL EON Power 10 Active Subwoofer

### Amplifier

1 x Perreux 6000 Power Amplifier

### Rackmount Gear

- 1 x Yamaha Q2031B Dual-Channel Graphic EQ
- 1 x Sabine FBX 2020 Dual-Channel Graphic EQ
- 1 x Yamaha GQ1031 Single-Channel Graphic EQ
- 1 x Peavey Q131 Single-Channel Graphic EQ
- 1 x Yamaha Rev 500 Effects Unit
- 1 x Marantz PMD 320 Single CD Player
- 1 x dbx 266XL Compressor/Gate

### Microphones

- 3 x Shure SM58
- 4 x Shure SM57
- 2 x Shure SM94
- 1 x Shure Beta 52a (Bass Instrument Mic)
- 1 x Sennheiser e835

### DIs

- 1 x Radial ProD2 DI (Stereo)
- 5 x Behringer Ultra-DI (Mono)

## Stage Box

- 1 x 24in/6out Multicore 35m
- 1 x 8in/4out Cordial Multicore 15m

## Mic Stands

- 11 x Vocal Microphone Stands
- 3 x Instrument Microphone Stand
- 1 x Desktop Microphone Stand

## Lighting and Haze

### Console

- 1 x Event Lighting Kontrol16
- 1 x Jands 4-Pak 240V Dimmer

### Lights

- 4 x Par 56 240V
- 3 x Par 46 240V
- 6 x Par 16 240V
- 4 x Nitek Lite Par T12 Colour LED
- 2 x Selecon Fresnel 650W
- 1 x Selecon Acclaim PC 650W
- 2 x Cyc Cell Flood 500W
- 2 x Selecon Zoomspot 650W (24–40 degrees)
- 3 x Selecon Living Light 75W (12V)

### Smoke Machine

1 x Antari W510 Smoke Machine with Remote

## Video and Recording

### Camera

- 2 x Panasonic Lumix G7 DSLR (w/ 14–42mm and 45–150mm lens)
- 1 x GoPro HERO 7

## Capture Card

1 x Elgato Cam Link 4K

## Video Switcher

1 x Roland V-1HD

## Tripod

3 x Manfrotto Compact Action Tripod

## Green Screen

1 x Elgato Collapsible Chroma Key Panel – 1800mm x 1480mm

## Audio Recorder

- 1 x Zoom H4n Handheld Recorder (w/ Windshield)
- 1 x Røde Wireless GOII Kit (2 x Transmitter, 1 x Dual Receiver)

## Staging and Drapes

### Staging

- 7 x Rostra Folding-Leg Stage Section (2400mm x 1200mm x 300mm)

### Tarkett Floor

- 3 x Sections of 5m x 2m Soft-Shoe Dancefloor (to create 30m<sup>2</sup> floor)

### Drapes

- 8 x Black Wool Drapes – 3100mm Wide x 3500mm Drop
- 2 x Black Wool Drapes – 2000mm Wide x 2100mm Drop
- 1 x Red Mechano Drape – 6500mm Wide x 4300mm Drop

## Drape Supports

- 11 x Adjustable Upright Poles
- 10 x Telescopic Crossbars (up to 3m)
- 11 x Baseplates including Spigots

## Shot Bags

16 x 10kg Shot Bags

## Rigging Equipment

### Truss

3 x 4m Tri-truss Sections (300mm C-C) with Semi-Circle Baseplates

### Boom Arms

9 x Boom Arm Bracket – Heavy Duty, Twisted

### Winch-up Stand

1 x 12-foot Winch-up Stand with 2m T-Bar

## Access Equipment

### Elevated Work Platform

1 x Crown WAV – Single Person Lifter

### Ladder

1 x 3m A-Frame Ladder

1 x Rhino 1.8m Step Ladder

# Additional Information





# Pricing

Room	Not for Profit/Community Rate			Commercial Rate		
	Per Hour	Full Day	Weekly (5 days)	Per Hour	Full Day	Weekly (5 days)
<b>Theatre</b> Meetings, Rehearsals and Developments	45	275	1000	50	400	1500
<b>Studio 1</b> Meetings, Rehearsals and Developments	35	200	800	50	300	1200

## Pricing

- Prices do not include GST.
- Minimum hire is 3 hours.

## Staffing

- Prices listed do not include staffing costs.
- Venue hires at Next Wave are expected to self-manage when using the venue. If you require staffing support, please communicate this when enquiring about venue use so staff can confirm our casual staffing availability and additional costings for this.

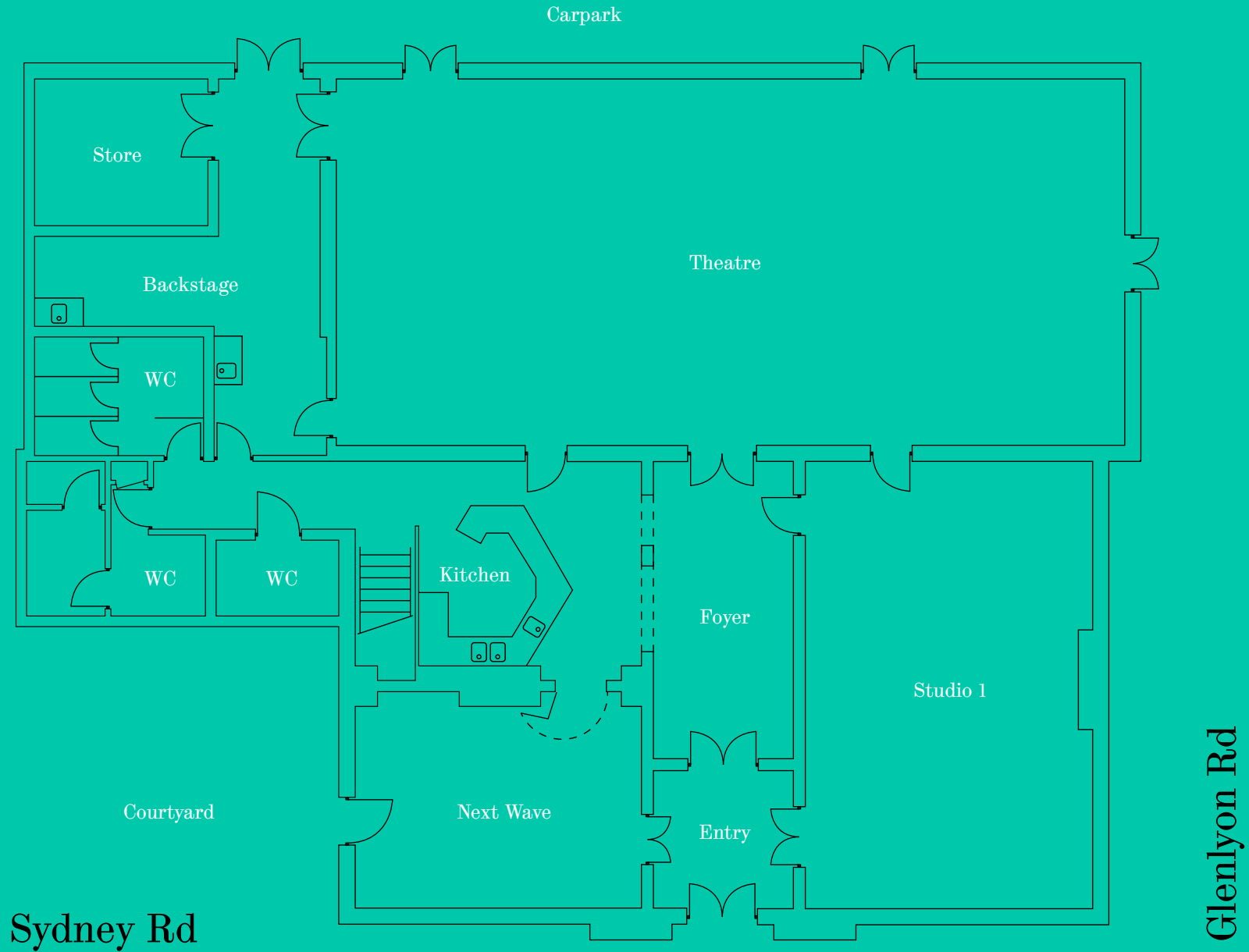
## Access

- Our venue is fully wheelchair accessible.

## Booking a Space

To book a space, come and see the venue or request a detailed quote, please contact: [mechanics@nextwave.org.au](mailto:mechanics@nextwave.org.au)

# Venue Plan



## Public Transport

Brunswick Mechanics is located next to the Brunswick Town Hall/ Sydney Road tram stop on the number 19 line, just a 17-minute tram ride from Melbourne Central.

The nearest wheelchair accessible tram stop is Brunswick Road/ Sydney Road (stop 19), which is 800m from the venue.

By train the venue is located half-way between Jewell and Brunswick stations and is 600m from each station.

The 506 (Moonee Ponds – Westgarth Station) bus runs along Glenlyon Road with a stop just outside Brunswick Mechanics on Glenlyon Road.

## Cycling

Brunswick Mechanics opens onto the corner of Sydney Road and Glenlyon Road, adjacent to Brunswick Town Hall.

A dedicated cycling lane runs along Glenlyon Road and along the Upfield train line.

## Parking

General permit parking is available in the car park directly behind the venue with entry located on David Street. The car park permit hours of operation are 8am – 5pm. Parking after 5pm is free.

There are 2 x wheelchair accessible parking spaces located at the corner of David Street and Glenlyon Road, and another 2 x wheelchair accessible parking spaces

located a little further down Glenlyon Road, in front of the Brunswick Community Health Centre. If navigating to the venue entrance from these parking spaces, you'll need to head back up Glenlyon Road (towards Sydney Road), in order to enter the venue.

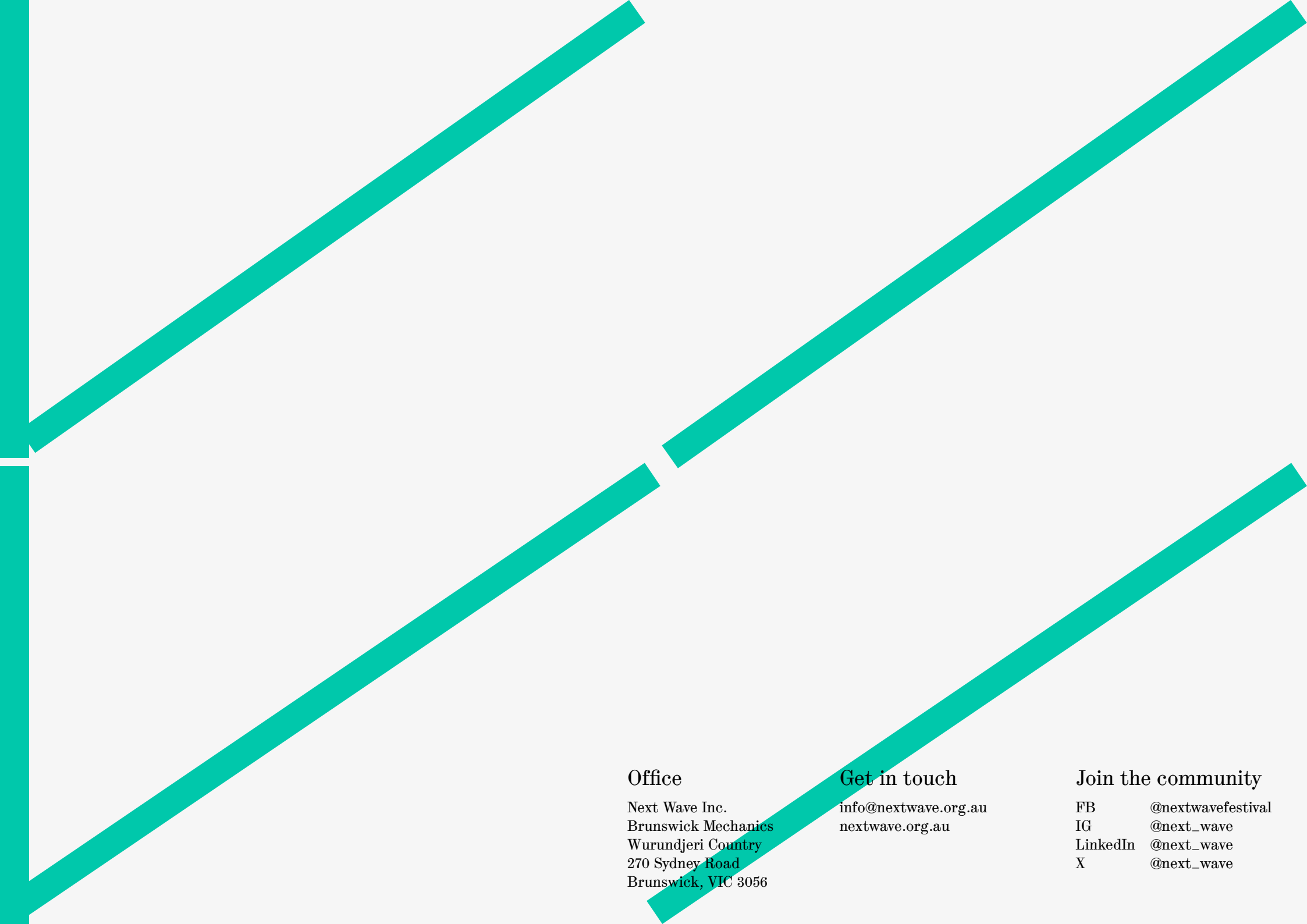
## Sustainability

Brunswick Mechanics strives to be an example of eco-conscious venue management within the local Merri-bek community and beyond.

Brunswick Mechanics is a wheel-accessible venue, with gender-neutral and accessible bathrooms. The hireable spaces operate on one level; however flooring can be uneven in places.







## Office

Next Wave Inc.  
Brunswick Mechanics  
Wurundjeri Country  
270 Sydney Road  
Brunswick, VIC 3056

## Get in touch

[info@nextwave.org.au](mailto:info@nextwave.org.au)  
[nextwave.org.au](http://nextwave.org.au)

## Join the community

FB	<a href="#">@nextwavefestival</a>
IG	<a href="#">@next_wave</a>
LinkedIn	<a href="#">@next_wave</a>
X	<a href="#">@next_wave</a>