

Next Wave,

Visual story: Brunswick Mechanics - audiences

Next Wave is an arts organisation in Brunswick. We host lots of performances, workshops and events.

Address: 270 Sydney Road, Brunswick, Melbourne

This guide is to help you plan your visit to Brunswick Mechanics.

If you have any questions about the venue or accessibility, please contact us.

Email: NextWave@NextWave.org.au

How to get inside Brunswick Mechanics

Brunswick Mechanics is on the corner of Sydney Road and Glenlyon Road.



This is the front of Brunswick Mechanics.



At night, the building is lit up with bright colours.



The building has a ramp.

There are handrails on either side of the ramp.



The front door has a wooden lip.

It is rounded and about 2cm high.

The Foyer

After entering the building, you will be in the foyer.



From the foyer you can access the:

- Theatre
- Bar
- Bathrooms
- Studio

The Theatre

The Theatre is used for performances and events.

The room may look different depending on what is happening.

Sometimes the room will have a stage and chairs.

We tell audiences if a performance has flashing lights or haze.



The double doors
leading to the theatre
will be open.



The theatre is a large room, with drapes hanging from the walls.

The theatre can be used for:

- film screenings
- performances
- workshops
- panels
- work-in-progress showings



The Studio

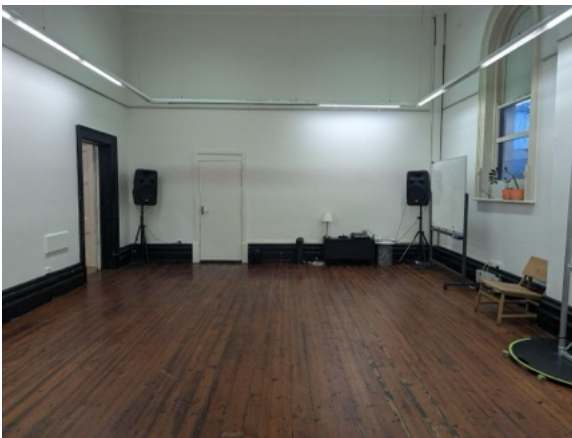
The studio can be used for:

- creative developments
- workshops
- rehearsals
- artist talks



You enter the studio from the foyer.

The double doors will be open.



The studio is a large room with wooden floors.

Bathrooms

Brunswick Mechanics has 3 gender-neutral bathrooms.



To access the bathrooms, go past the bar and down the hallway.



At the end of the hall, there is a gender-neutral bathroom with stalls and urinals.



There is also an accessible bathroom.

It is a large room.

There is a grab rail next to the toilet.

There is also a baby change table located in this bathroom.

Food and drinks

We have a bar that sells alcoholic and non-alcoholic drinks during events.

Depending on the event, we may also offer food. If we are providing food, we will let you know before the event.

People are also welcome to bring their own food at any time.



The bar is in the Foyer.

There are a variety of seating options, including:

- high stools
- a couch
- chairs with back support



The bar is wheelchair accessible.

